

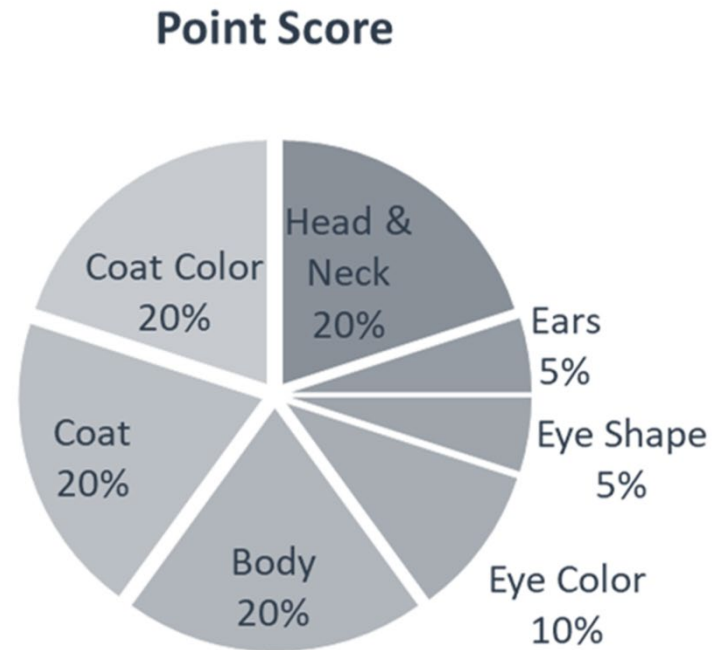
The RUSSIAN BLUE



...an illustration of the CFA standard



The good show specimen has good physical condition, is firm in muscle tone, and alert.



- 50%: Coat, Color, Eye Color
- 50%: Head, Body

HEAD (20), Ears (5), Eye Shape (5):

- Smooth, medium wedge flowing from blunt muzzle
- Broad across eyes
- Flat top head angles to straight nose
- Tophead longer than nose
- Neck long and slender, appears short due to thick fur and high shoulder blades



Head (continued):



- **Eyes set wide apart**
- **Rounded eye (5) aperture**

- **Ears (5) large and wide at base**
- **Ears set far apart, as much on the side as the top of the head**



Body (20)

- Long, fine boned, firm, muscular
- Lithe and graceful; NOT tubular



Body (continued):

- **LEGS:** long and fine boned.
- **PAWS:** small, slightly rounded.
- **TAIL:** long, proportionate to body



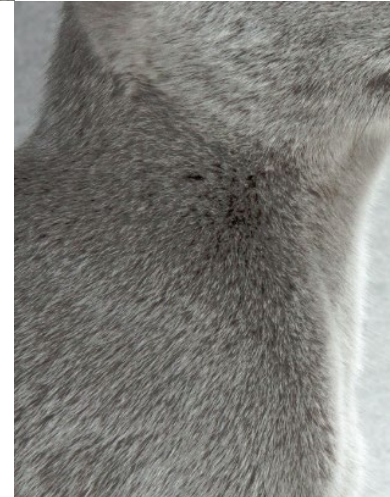
Coat (20):

- Short, dense, fine, plush.
- Stands out from body due to density, non-resilient
- Distinctive soft and silky feel



Color: Coat (20) and Eye (10)

- Even bright blue; lighter shades preferred.
- Guard hairs distinctly silver-tipped (actually clear-tipped)
- Definite contrast between ground color and tipping
- Eyes: vivid green

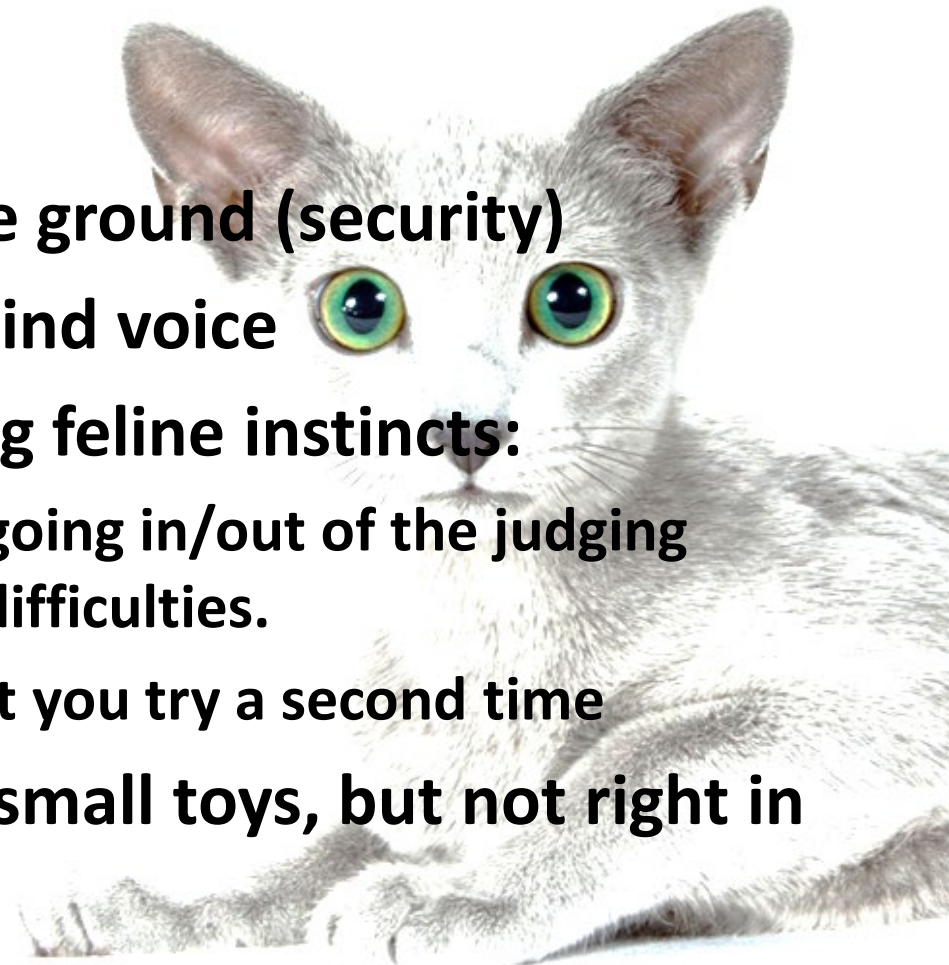


Disqualify

- **Kinked or Abnormal tail**
- **Locket or button**
- **Incorrect number of toes**
- **Any color other than blue**
- **Long coat**

Handling:

- Prefer all four feet on the ground (security)
- Will often respond to a kind voice
- Russian Blues have strong feline instincts:
 - Facing another cat while going in/out of the judging cage may be a recipe for difficulties.
 - Hard to bluff—may not let you try a second time
- Enjoy a feather or other small toys, but not right in the face.
- Clear the deck...no one wants to see a kitten or cat slip-sliding around on paperwork or flats.



L. Johnson ©