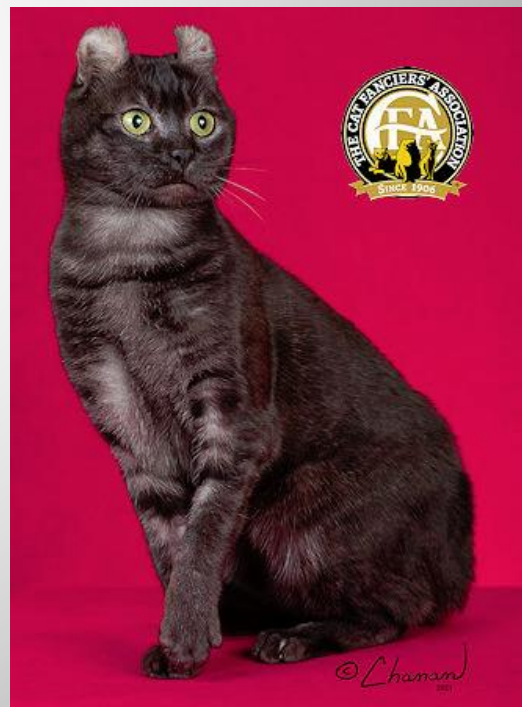




The American Curl



The ESSENCE of the AMERICAN CURL

**A WELL-BALANCED Cat with
Uniquely curled-back ears**

**Alert, Active, with Gentle
Dispositions**

**Longhair and Shorthair
Varieties—each with a soft,
silky texture**

**Medium sized, Rectangular
Body Shape, Slender build**



AMERICAN CURL – POINT SCORE

Further Breakout of Points

EARS (30):

degree of curl – 10

shape/size – 10

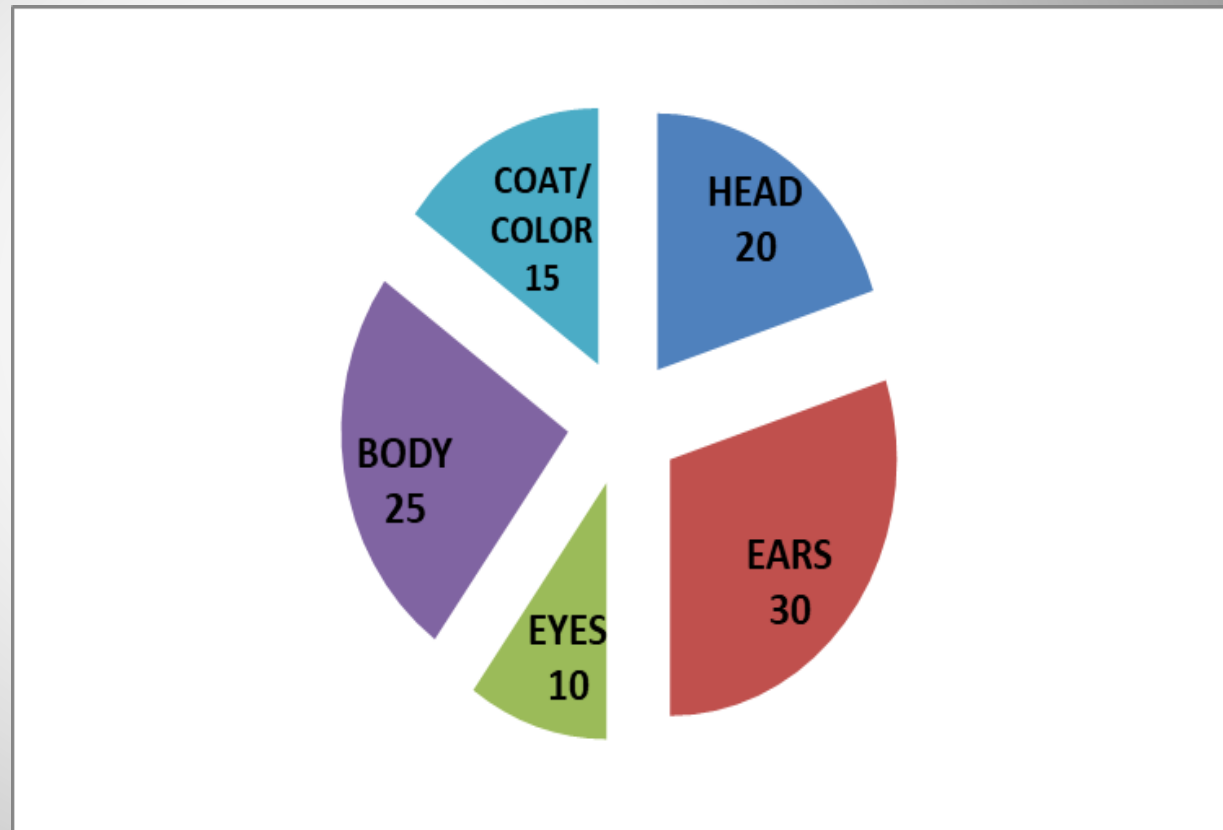
placement – 8

furnishings – 2

COAT/COLOR (15)

color – 1

texture, length – 14



American Curl - Head

- Modified wedge shape
- Moderately longer than wide
- Smooth transitions
- Profile: straight nose, slight rise from bottom of eyes to forehead
- Rounded muzzle without whisker break



American Curl - Ears

Moderately large

Erect, set equally on top and side of head

Wide at base, open

Firm cartilage from earbase to at least 1/3 of height



American Curl – Ears (continued)

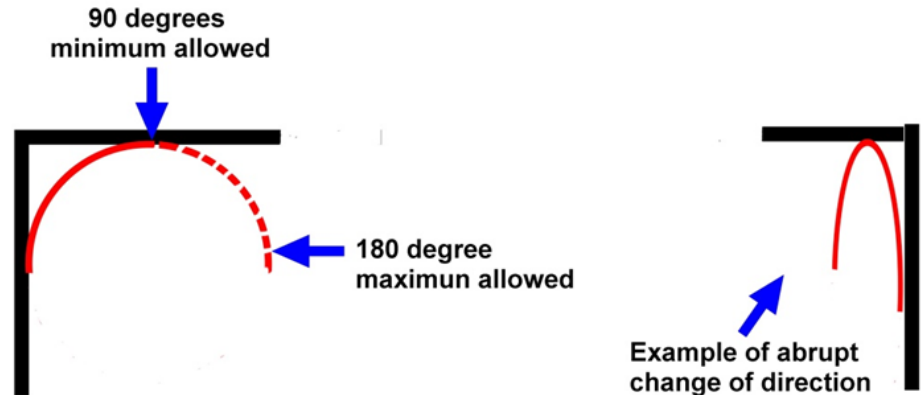
Arc of Ear Curl:

90 degree minimum

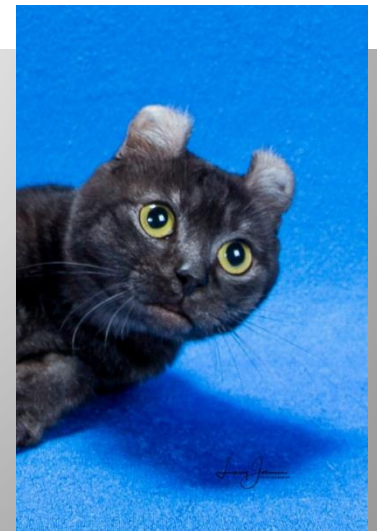
180 degree maximum

Ear curves back in smooth arc, viewed from front or rear

Ear tips rounded and flexible



Although the 180 degree ear is allowed the 90 degree is preferred.



American Curl - Body

Size: Intermediate

Torso: Rectangular shape; length 1.5 x height at shoulder. Medium depth of chest, flank

Legs: Medium length, boning

Tail: flexible, wide at base, tapering, equal to body length



American Curl - Eyes

Moderately large

Walnut shaped: oval top,
round bottom

Set on slight angle
between ear base and tip
of nose; one eye width
apart



American Curl – Coat, Color

Longhair:

- Fine, silky, minimal undercoat, lies flat
- Semi-long, tail plumed

Shorthair:

- Soft, silky, minimal undercoat, lies flat
- Short length

**ALL Colors/Patterns
allowed**



American Curl – Penalize/Disqualify

Penalize:

Ears: low set, abrupt change of direction, pinched, crimped, corrugated

Body: tubular or cobby

Coat: heavy ruff, coarse or cottony texture; dense or plus SH coat

Disqualify:

Ears: extreme curl in adult where tip of ear touches back of ear or head.

Ears that are straight, mismatched , thick or with inflexible tips

Lack of firm cartilage in base of ears

Tail: tail faults